

\*\*\*\*\*

Marine Weather Forecast for Chesapeake Bay Entrance  
Forecast valid as of 08-Nov-2021 1800 GMT

\*\*\*\*\*

All times are local.

Today

Winds: N, 15-20 kts.  
Waves: E, 5-6 feet, 10-11 sec.  
Currents: S, 0.5-1 kts.

Tonight

Winds: N, 10-15 kts.  
Waves: E, 4-5 feet, 10-11 sec.  
Currents: S, less than 0.5 knot.

Tuesday

Winds: N, 5-10 kts.  
Waves: E, 4-5 feet, 10-11 sec.  
Currents: SE, less than 0.5 knot.

Tuesday Night

Winds: N, 10-15 kts.  
Waves: E, 3-4 feet, 10-11 sec.  
Currents: E, less than 0.5 knot.

Wednesday

Winds: N, 5-10 kts.  
Waves: E, 3-4 feet, 10-11 sec.  
Currents: E, less than 0.5 knot.

Wednesday Night

Winds: E, 10-15 kts.  
Waves: E, 2-3 feet, 10-11 sec.  
Currents: SE, less than 0.5 knot.

Thursday

Winds: NE, 10-15 kts.  
Waves: E, 2-3 feet, 9-10 sec.  
Currents: W, less than 0.5 knot.

Thursday Night

Winds: N, 20-25 kts.  
Waves: E, 4-5 feet, 9-10 sec.  
Currents: N, less than 0.5 knot.

Friday

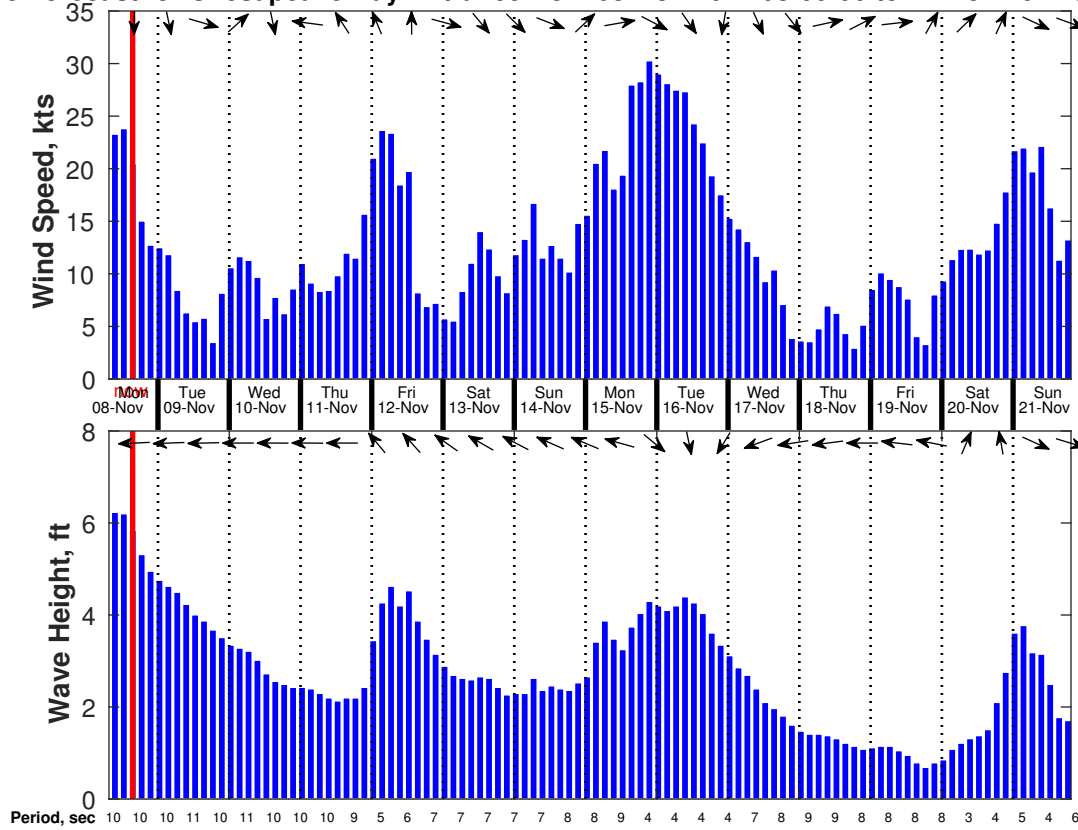
Winds: N, 15-20 kts.  
Waves: NE, 4-5 feet, 7-8 sec.  
Currents: N, less than 0.5 knot.

Friday Night

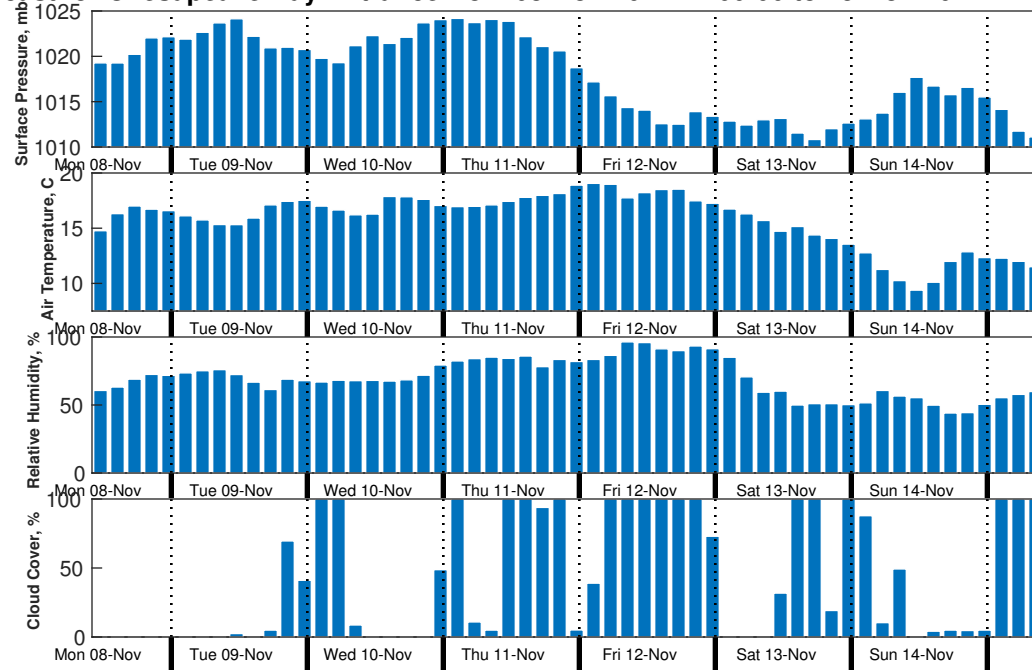
Winds: NW, 5-10 kts.  
Waves: NE, 3-4 feet, 7-8 sec.  
Currents: E, less than 0.5 knot.

---

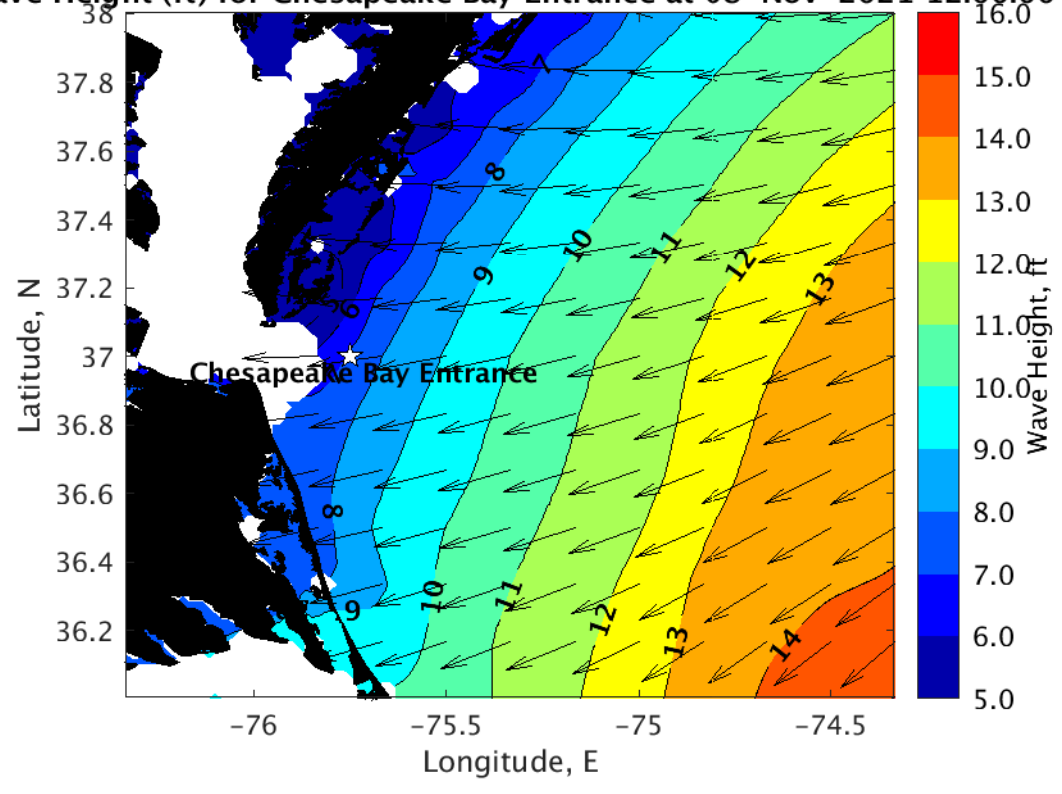
**Wind & Wave Forecast for Chesapeake Bay Entrance from 08-Nov-2021 08:00:00 to 22-Nov-2021 02:00:00**



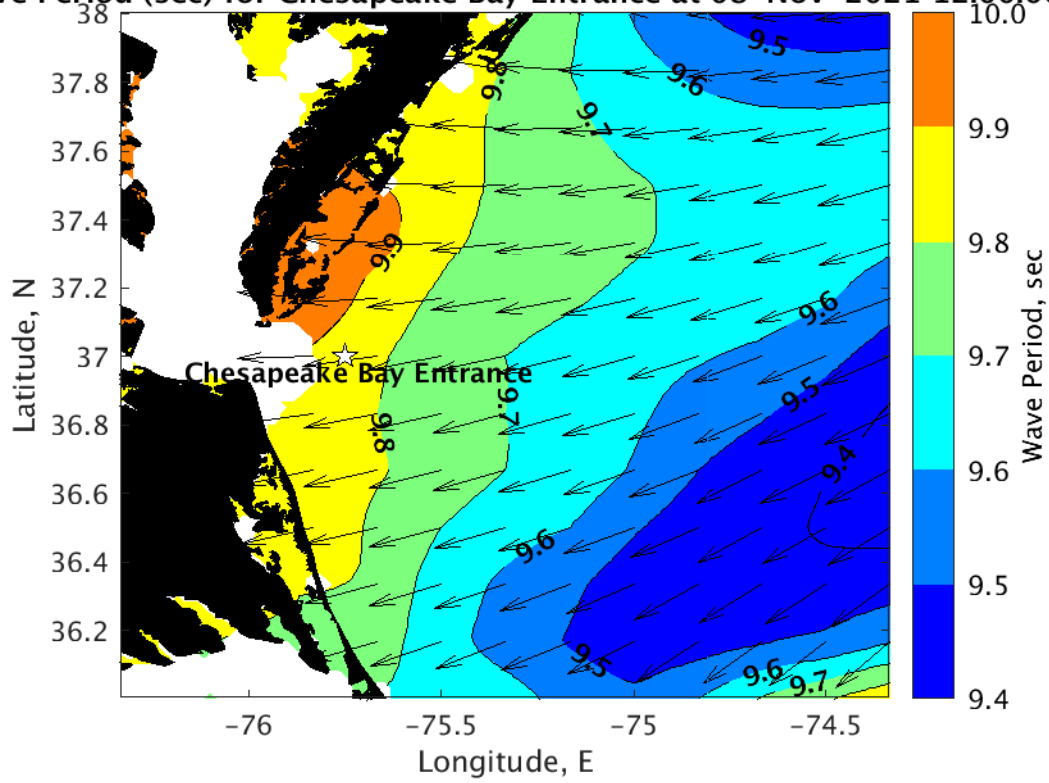
**Met Forecast for Chesapeake Bay Entrance from 08-Nov-2021 12:00:00 to 15-Nov-2021 12:00:00**



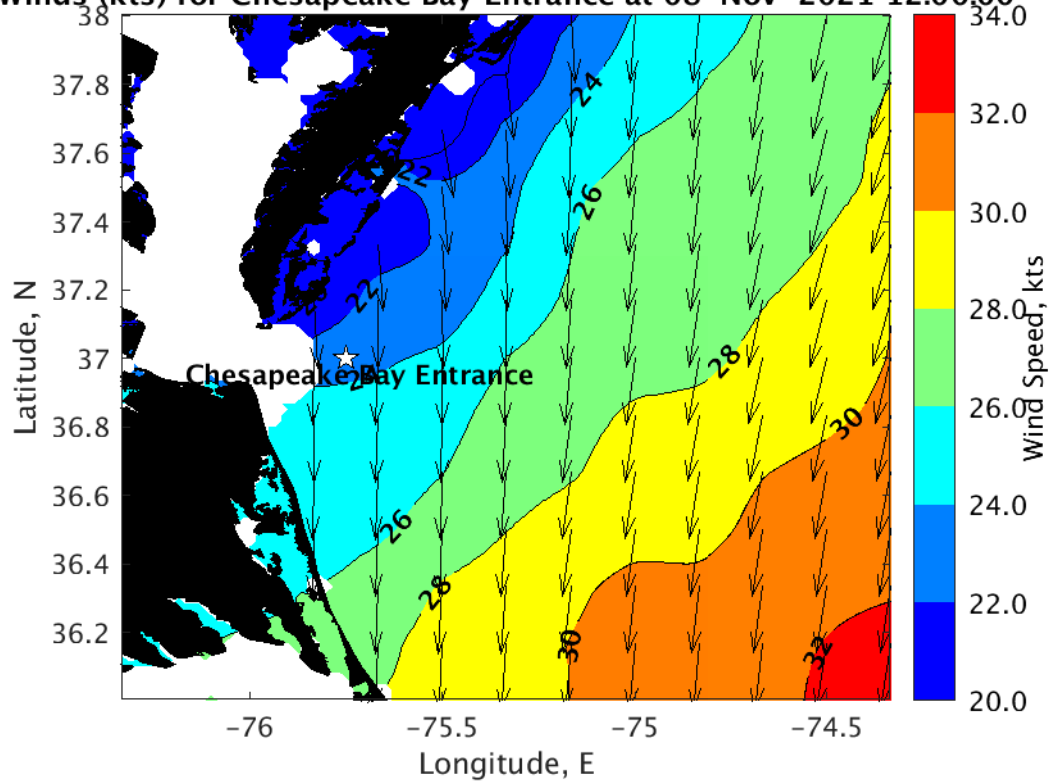
ave Height (ft) for Chesapeake Bay Entrance at 08-Nov-2021 12:00:00



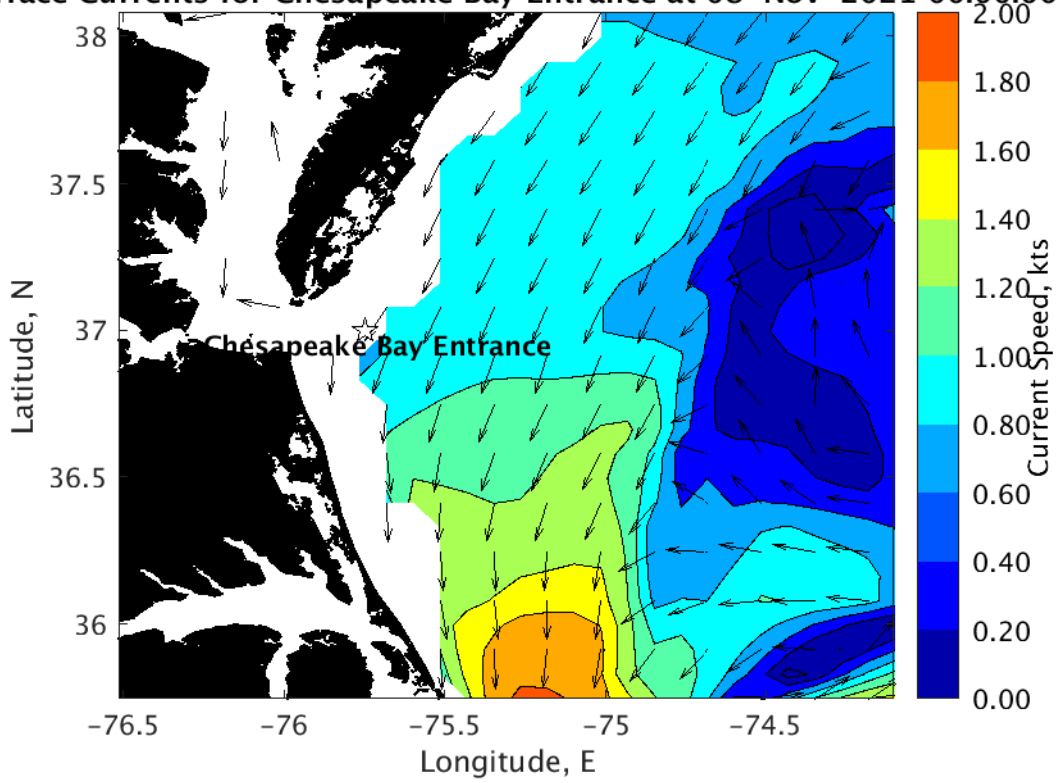
Wave Period (sec) for Chesapeake Bay Entrance at 08-Nov-2021 12:00:00



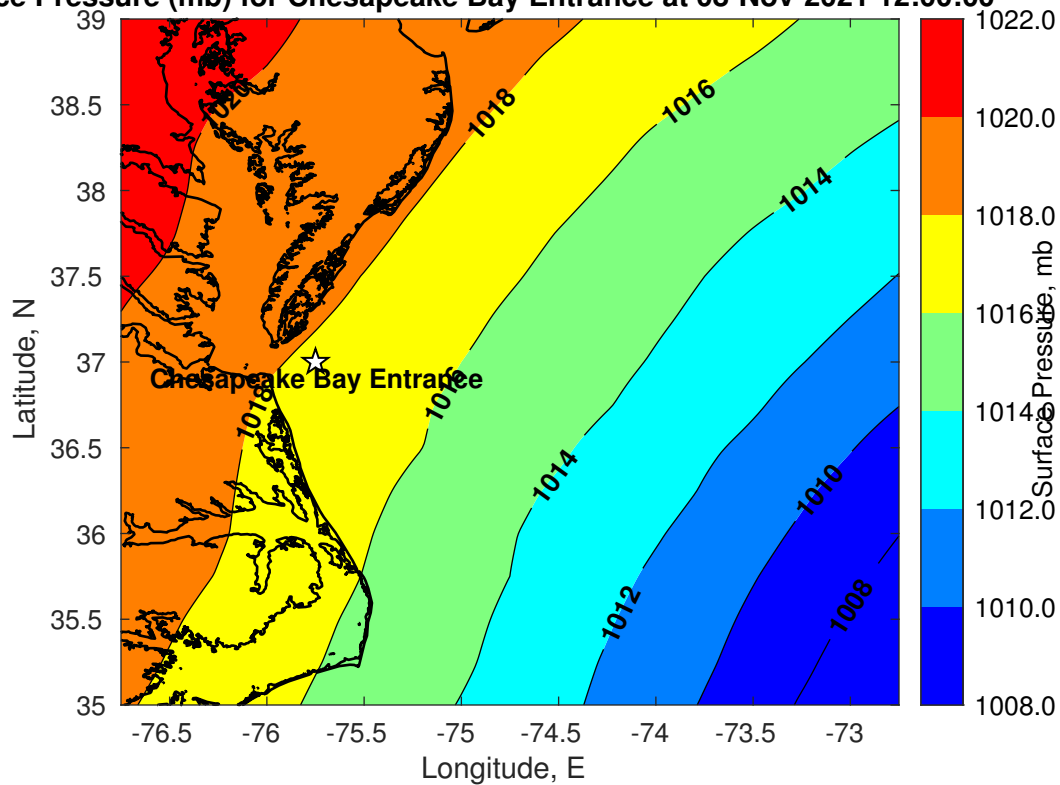
Winds (kts) for Chesapeake Bay Entrance at 08-Nov-2021 12:00:00



Surface Currents for Chesapeake Bay Entrance at 08-Nov-2021 00:00:00

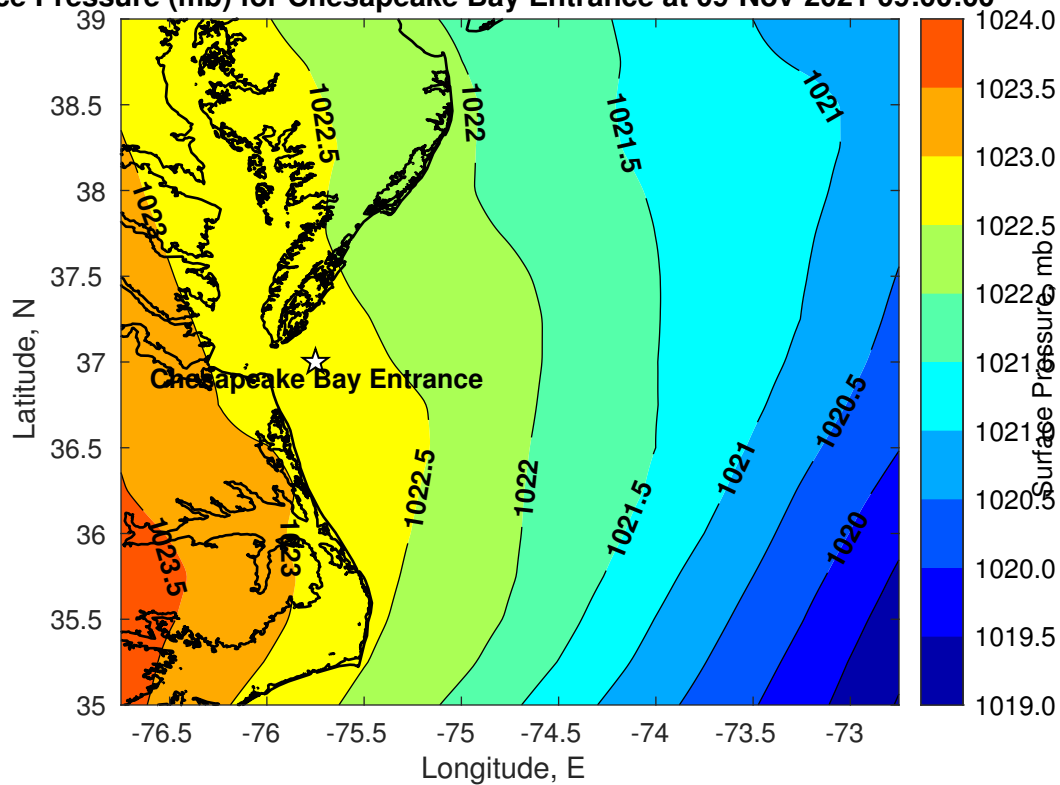


Surface Pressure (mb) for Chesapeake Bay Entrance at 08-Nov-2021 12:00:00

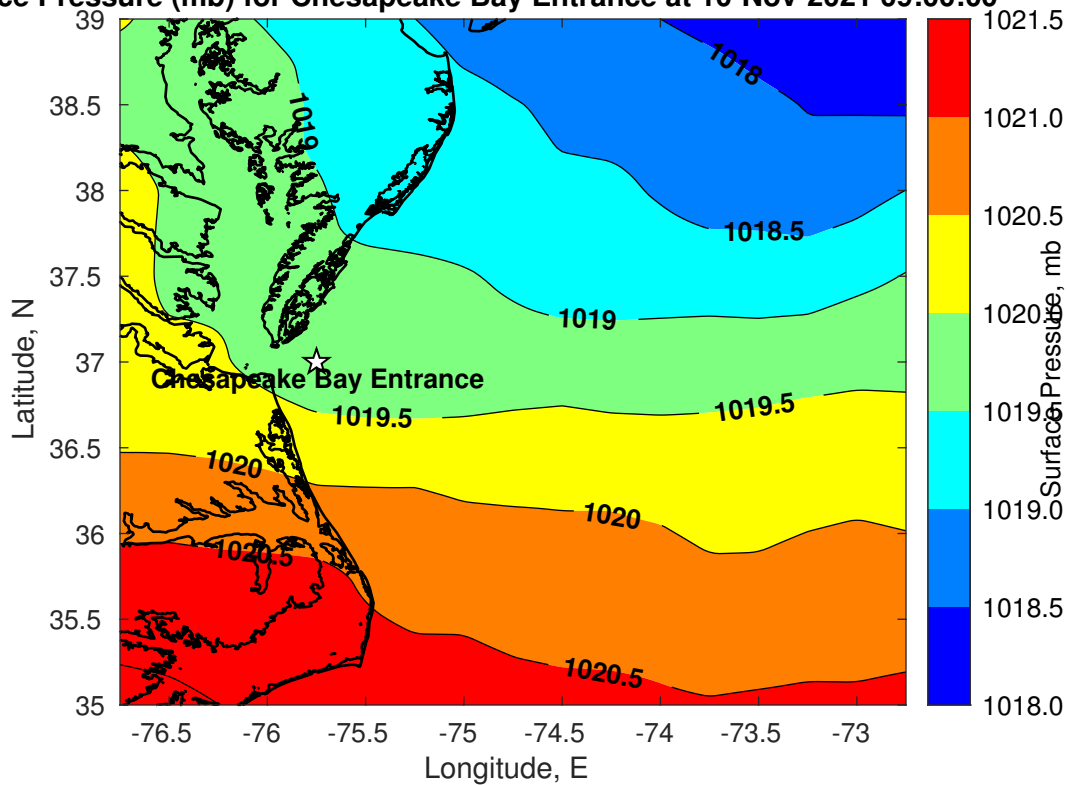




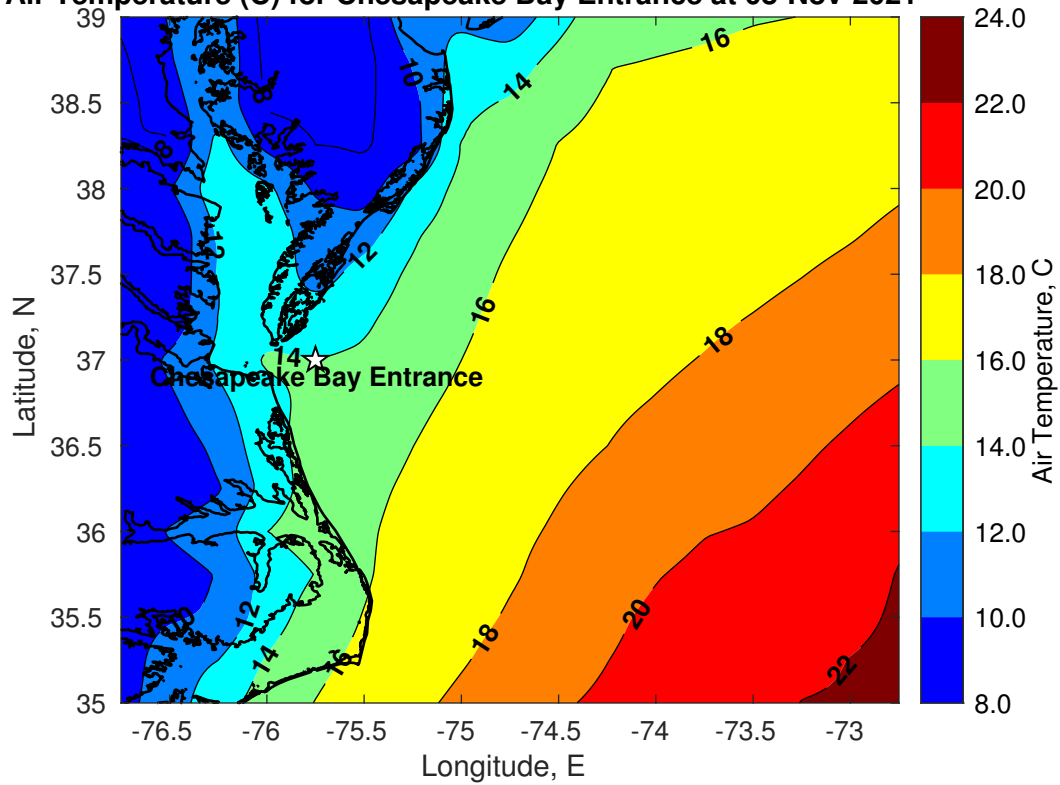
Surface Pressure (mb) for Chesapeake Bay Entrance at 09-Nov-2021 09:00:00



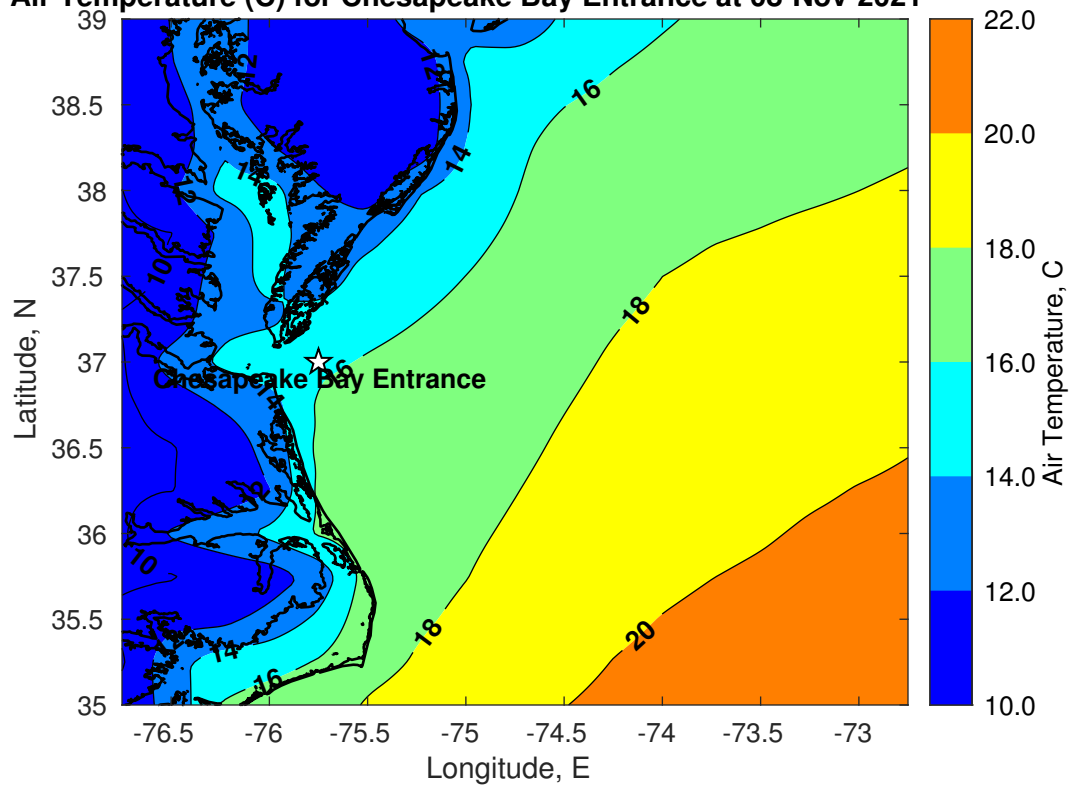
Surface Pressure (mb) for Chesapeake Bay Entrance at 10-Nov-2021 09:00:00



**Air Temperature (C) for Chesapeake Bay Entrance at 08-Nov-2021**



**Air Temperature (C) for Chesapeake Bay Entrance at 08-Nov-2021**



**Air Temperature (C) for Chesapeake Bay Entrance at 08-Nov-2021**

